

ECTEMNUS NIGRICEPS NOV. SPEC., A NEW SPECIES OF ANTHO-CORIDAE.

EDUARD WAGNER

Hamburg-Lgh. 1

(Accepted for publication November 16, 1949.)

From Mr. K. DORN, Leipzig, I received a number of animals of a species of *Ectemnus* FIEB. Mr. DORN added a remark, that these animals were not conform with HERRICH-SCHAEFFERS figure of *E. reduvinus* and that they were of a much darker colour. Exacter examination of the animals resulted that indeed we have here a new species, whom I want to give the name above mentioned.

Description: Black, brilliant, with fine hairs. Head black, very seldom a little brownish, very long. Eyes much nearer to the base than to the apex. Length of the hind part together with the eyes three quarters of the part before the eyes. Vertex 3,1 times as broad as the small flat eye. Part behind the eyes vaulted, not or scarcely strangulated (Fig. 1,

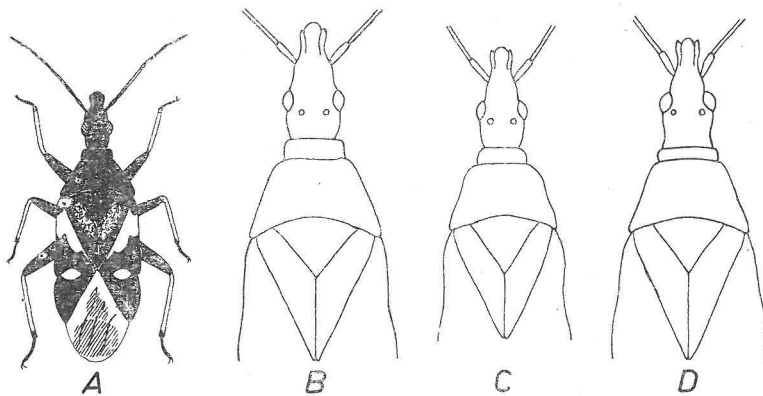


Fig. 1. *Ectemnus*. A = *E. nigriceps* nov. spec., f. macr. ♀ (12,5×); B = anterior part of *E. nigriceps* n. sp. ♀ (22,5×); C = id. of male; D = id. of *E. reduvinus* H. S. ♀.

B+C). Tylus distinctly surpassing the jugae in forward direction. Antennae black, 1 st joint thick, shorter than the vertex is broad; 2nd joint staff-like, in the middle a bright ring, 1,75times as long as the head is broad; joints 3+4 spindle-shaped, nearly of equal length, together a little longer than the 2nd., the 3rd bright at the base. Pronotum black, more rarely dark reddish-brown. Collar of pronotum strikingly broad, its breadth being

only one fifth of total length of pronotum. Sides of pronotum nearly straight. Scutellum black. Hemelytra of *f. macr.* (Fig. 1, A) surpassing the abdomen. Clavus with big brownish spot; Corium at the base largely whitish and in addition with an oval white spot at the suture of the cuneus. Membrane whitish, near the apex a big smoke-grey spot. With the *f. brach.* the membrane is entirely whitish, much shorter and scarcely surpasses the apex of cuneus. Thighs are black, tibiae light yellow with dark apex. The rostrum is black and reaches the end of the anterior coxae. Underside black. The genital segment of ♂ is nearly conical, its apex bent to the right (Fig. 2A). Left paramere big, flat and slightly bent, its outer margin shows a distinct notching (Fig. 2C).

Length: ♂ = 2,2–2,4 mm, ♀ = 3,1–3,6 mm.

E. nigriceps n. sp. distinguishes from *E. reduvinus* H. S. especially by the shape of the head and genitals, but also is less covered with hair and as a rule of a much darker colour. Examples with a brownish pronotum are rare, the head nearly always is black. With *E. reduvinus* the eyes are situated in the middle of the head, the part of the head before the eyes is as long as the hind part together with the eyes (Fig. 1D); the eyes are a little more vaulted, the vertex is with ♂ 2 times, with ♀ 2,6 times as broad as the eye. The part of head behind the eyes is strangulated like a neck; head and pronotum as a rule are reddish-brown; the tylus does not surpass the jugae in forward direction; the genital segment of ♂ is broader and obtuse (Fig. 2B) and shows at the right side no indentures; the paramere is longer and not indented at the outer edge (Fig. 2D).

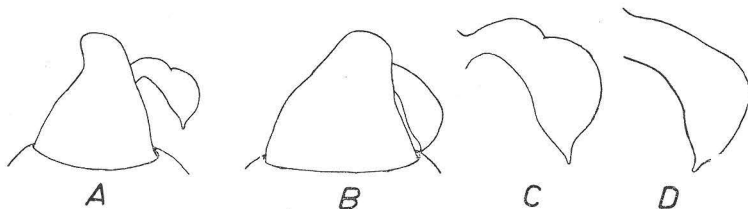


Fig. 2. Genitals of male. A = genital segment of *E. nigriceps* n. sp. from above (72×); B = id. of *E. reduvinus* H. S.; C = paramere of *E. nigriceps* n. sp. (142×); D = id. of *E. reduvinus* H. S.

I examined 28 ♂♂ and 14 ♀♀ and 3 larvae, all of which had been found near Lipsia (Kleinzschocher, Dewitz near Taucha, Albertpark, K. DORN leg.; Schönau O. MICHALK leg.). The dates of collection are between 7.7 and 9.11. Type and paratypes in my collection, paratypes also in the collections of K. DORN and O. MICHALK.

This interesting species in the shape of the head represents a distinct transition to the genus *Temnostethus* FIEB. Only in the length of rostrum it does not differ from the other species of the genus. But it seems doubtful if the two genera can be maintained.

Before I finish my work, I heartily thank Dr. M. BEIER from the Naturh. Museum, Wien, Mr. K. DORN and O. MICHALK at Lipsia for the assistance given to me.

Vydavatel: Národní museum v Praze. Vytiskla Státní tiskárna n. p., závod 05 (Prometheus), Praha VIII.

Šéfredaktor Dr. Ludvík Hoberlandt. Redakce: Národní museum, Praha II-1700.

Povoleno ministerstvem informací a osvěty, č. j. 81.168/II./50 ze dne 14. prosince 1950.

Vyšlo v Praze, dne 8. října 1951.